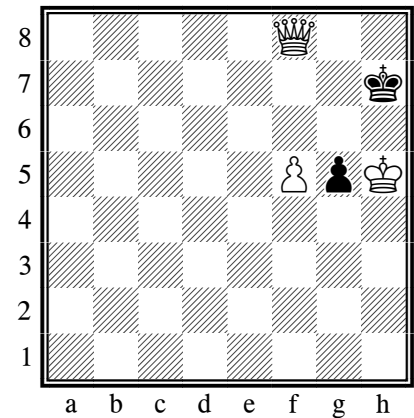
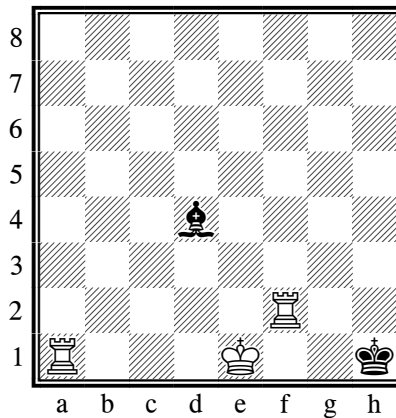
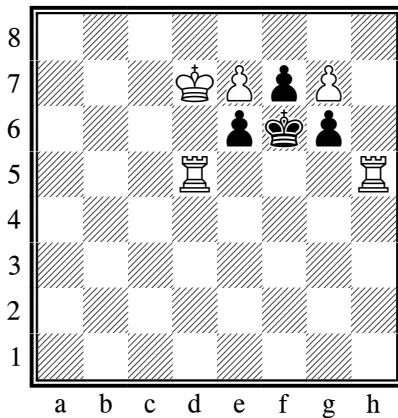
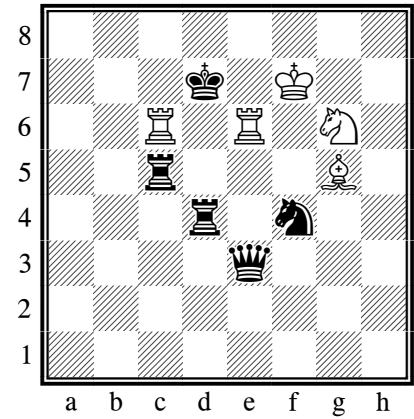
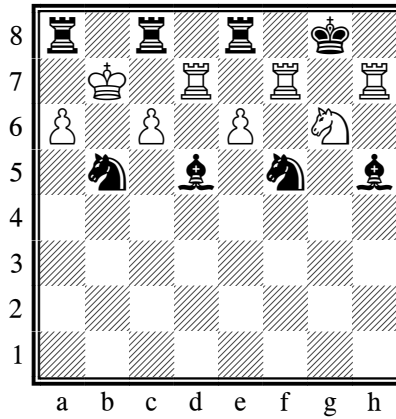
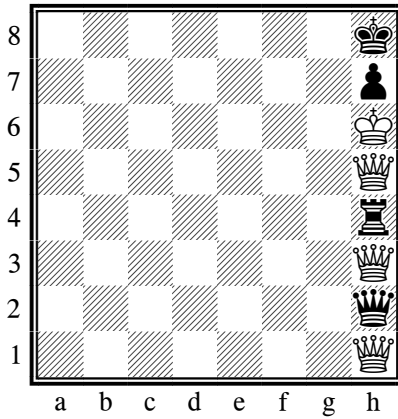
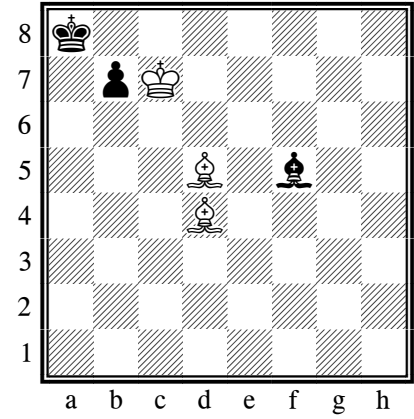
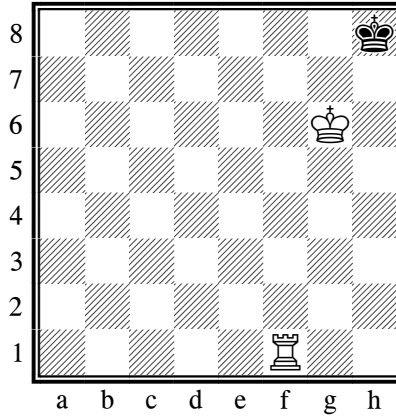
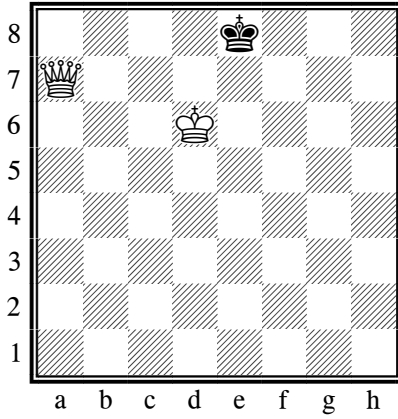


IMIĘ I NAZWISKO: _____ DATA: _____

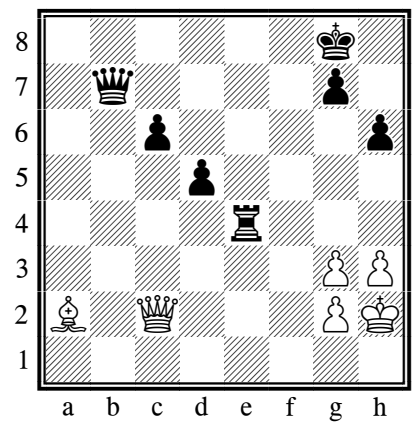
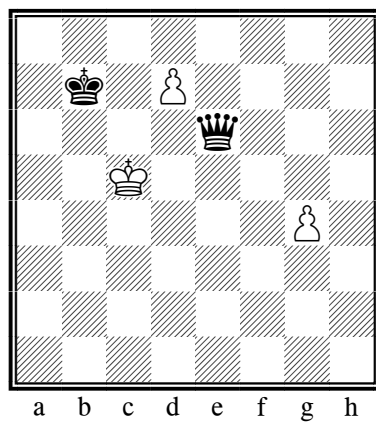
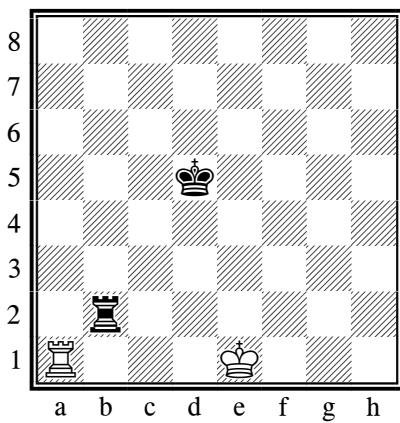
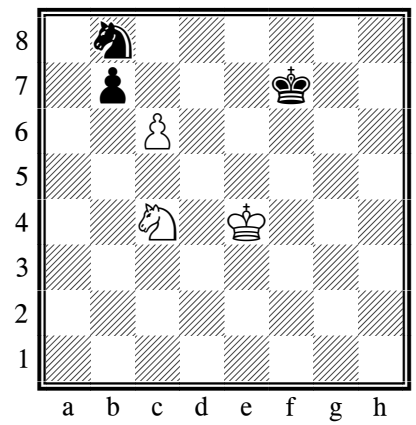
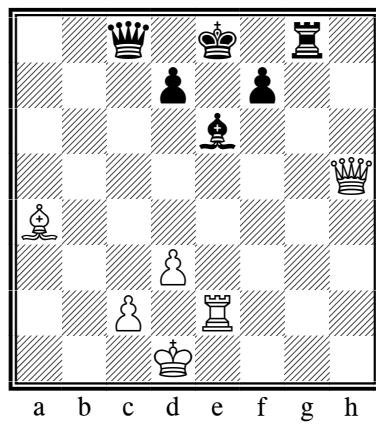
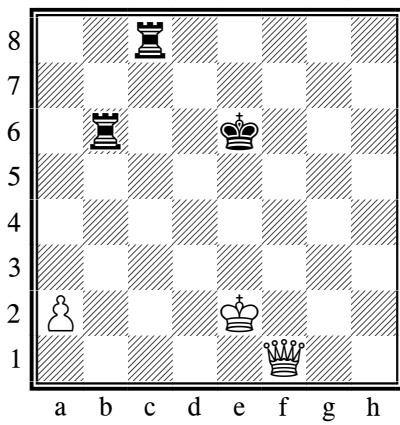
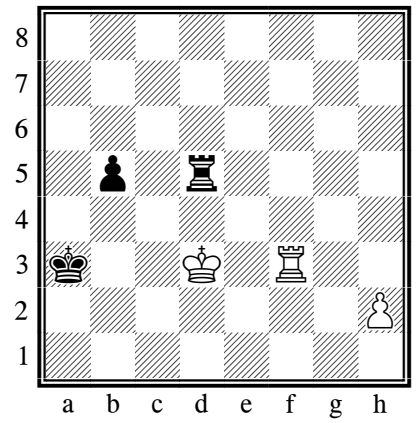
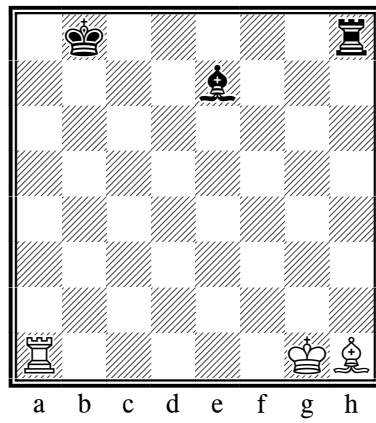
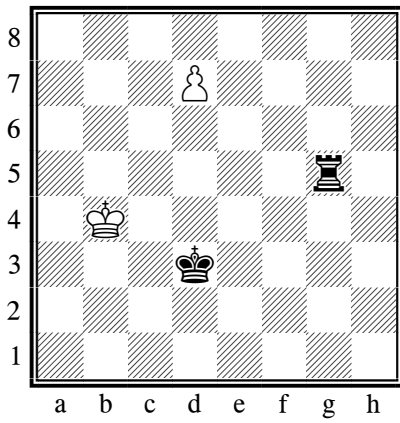
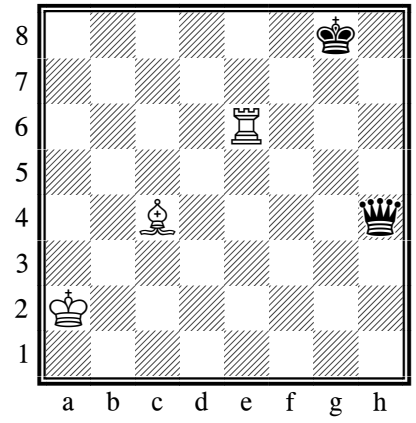
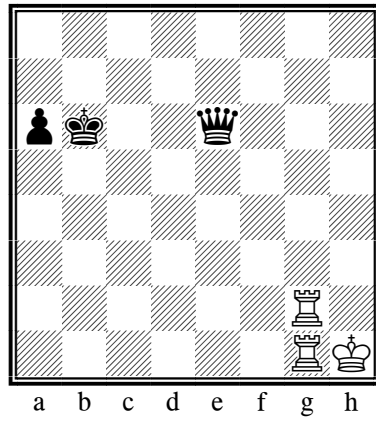
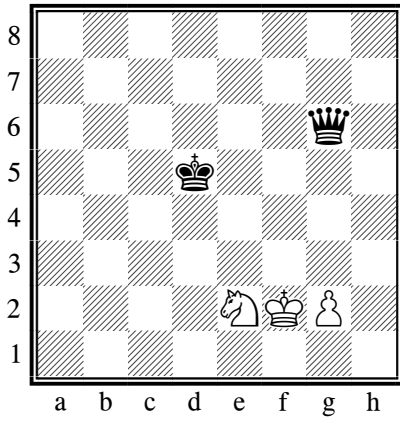
Ćwiczenie 1: Ruch białych. Zrób szacha mata w 1 ruchu.



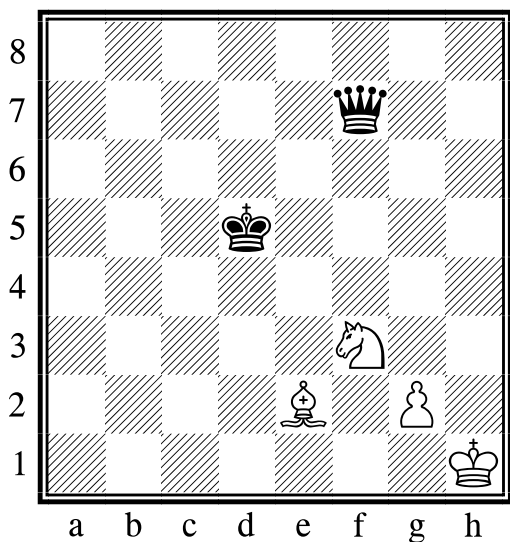
Ćwiczenie 2: Zaznacz w kółko odpowiedzi, czy te ruchy prowadzą do mata.

| | |
|-------------------------------------|------------------|
| 1. e4 e5 2. Hh5 Ke7 3. Hxe4 | MAT / NIE |
| 1. e4 f6 2. Hh5 | MAT / NIE |
| 1. f4 e5 2. g4 Hh4 | MAT / NIE |
| 1. e4 e5 2. Gc4 Sc6 3. Hh5 Sf6 Hxf7 | MAT / NIE |

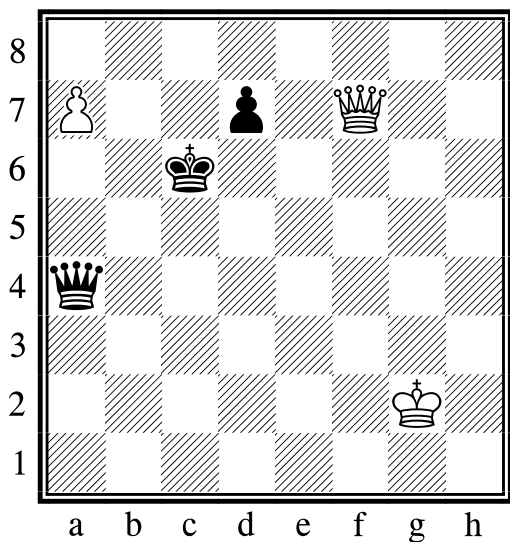
Ćwiczenie 3: Zdobądź białymi przewagę minimum 2 pkt. Zaznacz pierwszy ruch.



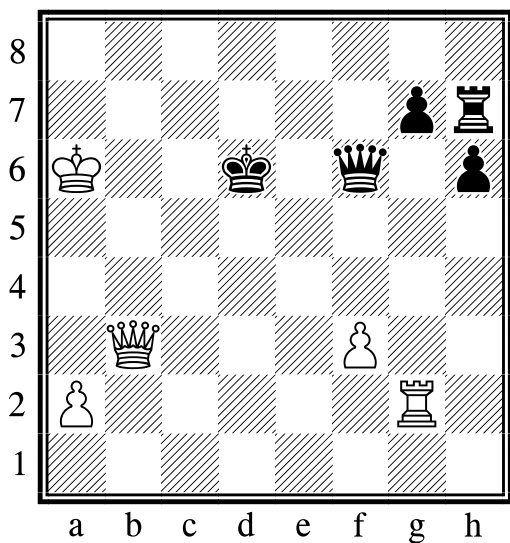
Ćwiczenie 4: Ruch białych. Zdobądź przewagę i zapisz przebieg gry.



| | BIAŁE | CZARNE |
|----|-------|--------|
| 1. | | |
| 2. | | |
| 3. | | +/- |



| | BIAŁE | CZARNE |
|----|-------|--------|
| 1. | | |
| 2. | | |
| 3. | | +/- |

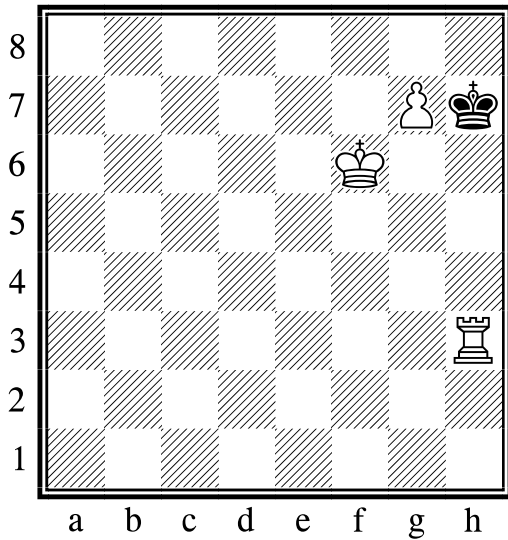


| | BIAŁE | CZARNE |
|----|-------|--------|
| 1. | | |
| 2. | | |
| 3. | | +/- |

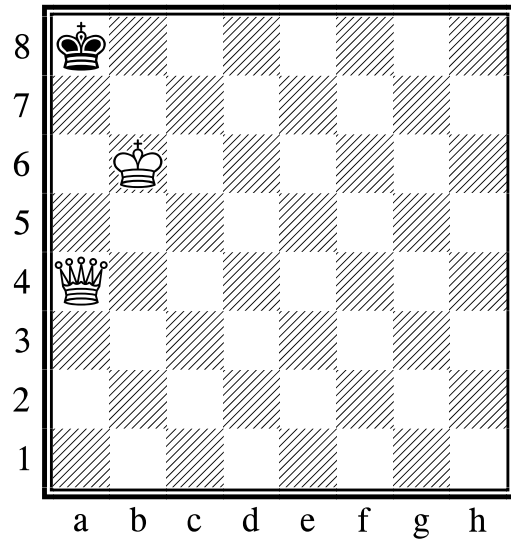
Ćwiczenie 5: Dokończ zdania (skreśl złe odpowiedzi).

1. Na planszy jest król na króla i wieża lub hetman, więc: da się wygrać / jest remis.
2. Na planszy jest król na króla i goniec lub skoczek, więc: da się wygrać / jest remis.

Ćwiczenie 6: Czarne na posunięciu. Zapisz ich wymuszony ruch i zrób białymi mata.

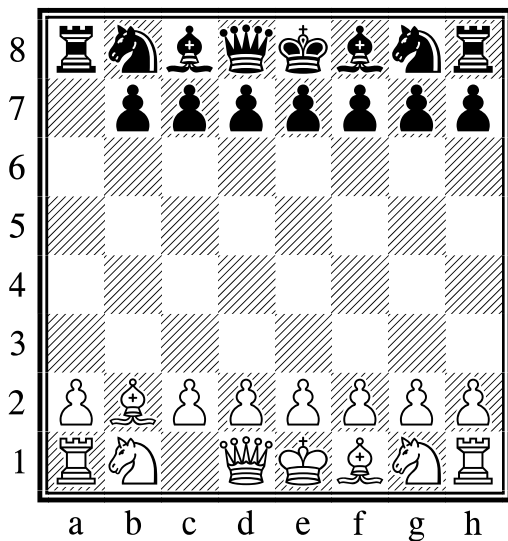


| | BIAŁE | CZARNE |
|----|-------|--------|
| 1. | Wh3+ | |
| 2. | | 1-0 |

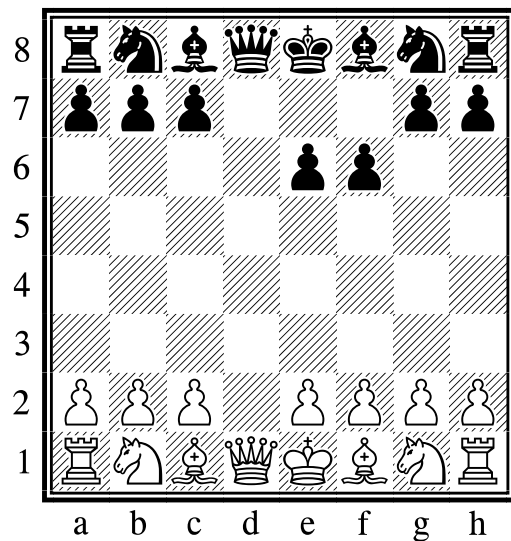


| | BIAŁE | CZARNE |
|----|-------|--------|
| 1. | Ha4+ | |
| 2. | | 1-0 |

Ćwiczenie 7: Zapisz jak doszło do tego ustawienia. Ruchy muszą być prawidłowe.



| | BIAŁE | CZARNE |
|----|-------|--------|
| 1. | | |
| 2. | | |
| 3. | | |



| | BIAŁE | CZARNE |
|----|-------|--------|
| 1. | | |
| 2. | | |
| 3. | | |

DATA

LICZBA PKT / OCENA

PODPIS NAUCZYCIELA